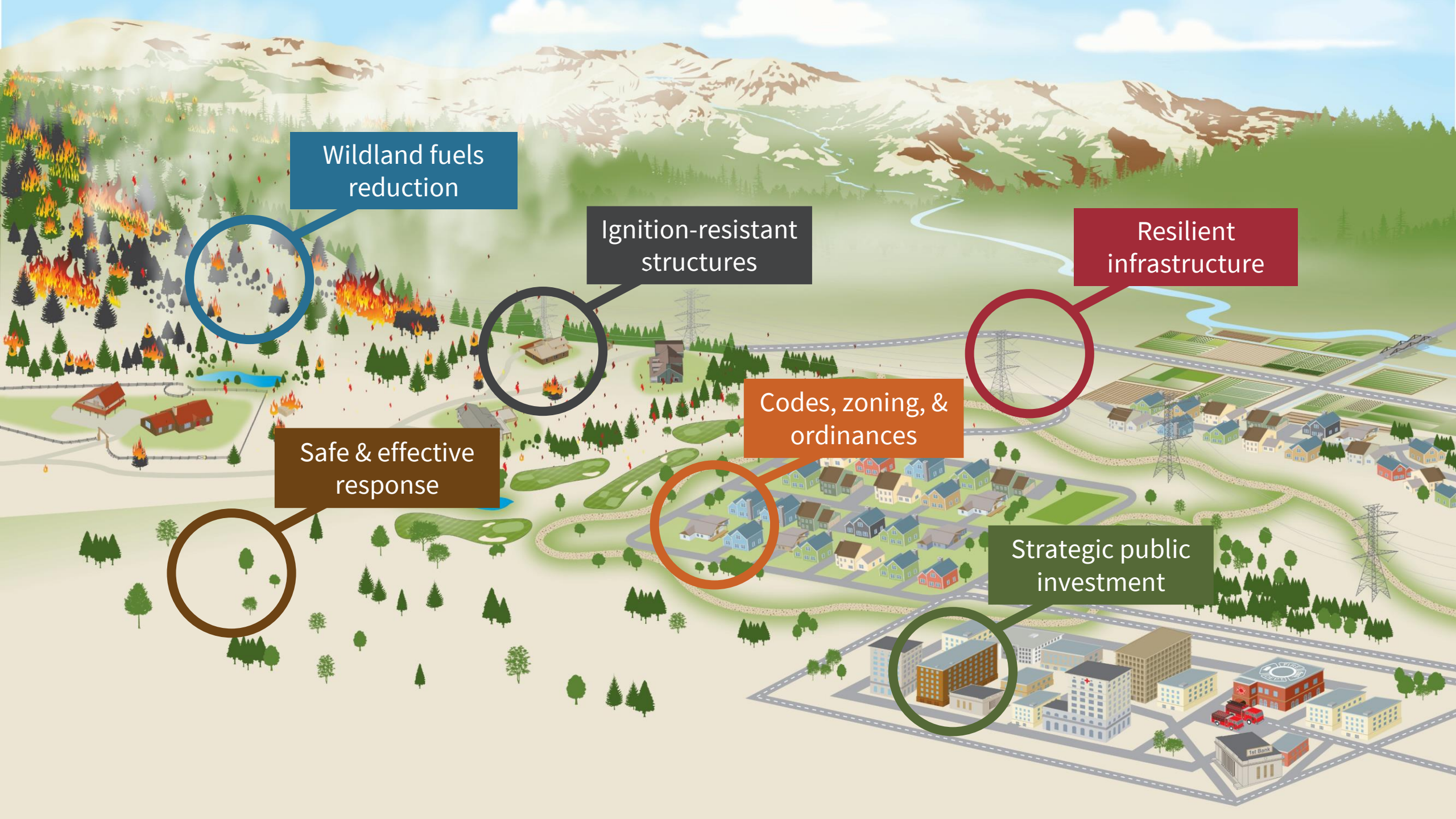


ACCELERATING

ADAPTATION TO WILDFIRES



HEADWATERS
ECONOMICS



Wildland fuels reduction

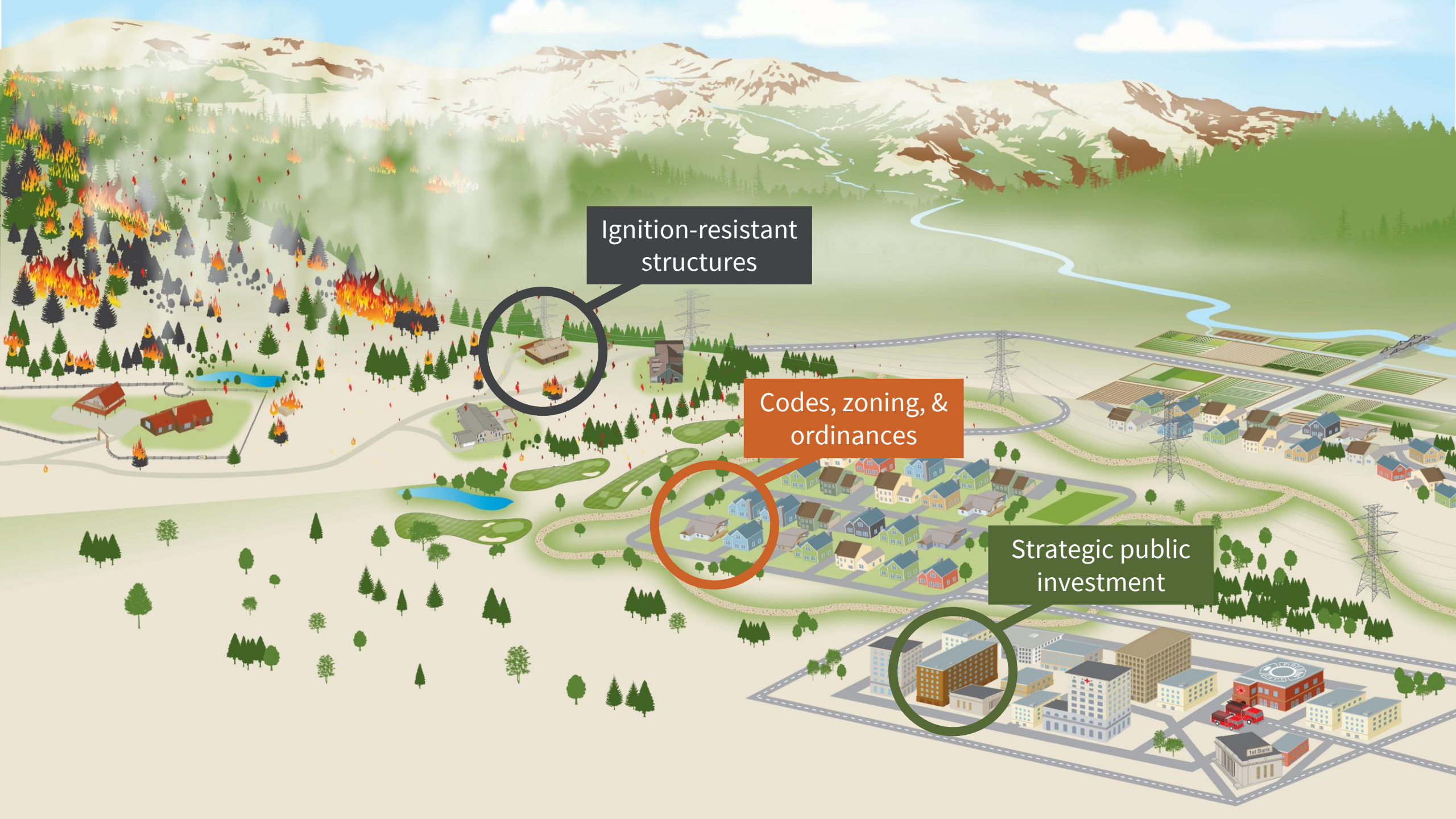
Ignition-resistant structures

Resilient infrastructure

Safe & effective response

Codes, zoning, & ordinances

Strategic public investment



Ignition-resistant structures

Codes, zoning, & ordinances

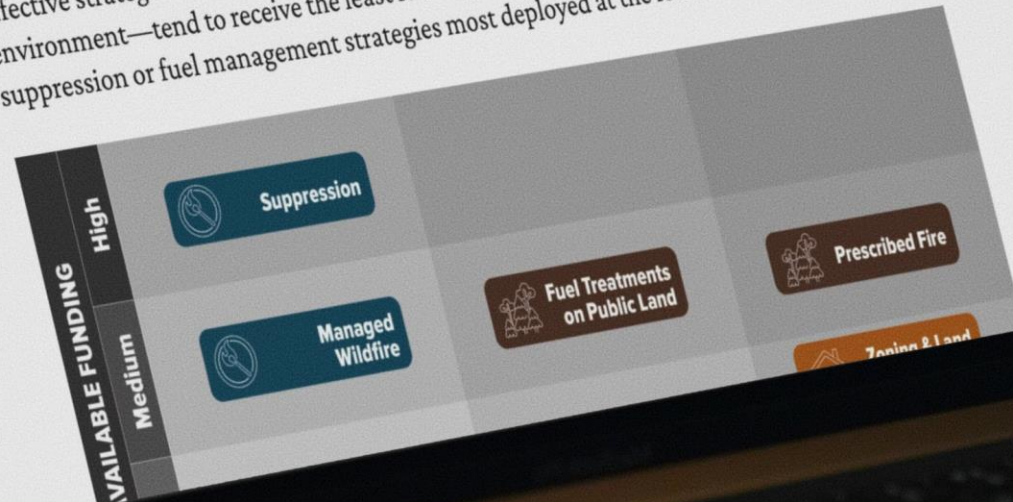
Strategic public investment



Missing the mark:

Effectiveness and funding in community wildfire risk reduction

An analysis from [Columbia Climate School](#) and Headwaters Economics finds that the most effective strategies for reducing community wildfire risk—those that manage the built environment—tend to receive the least funding and policy support when compared to the suppression or fuel management strategies most deployed at the federal and state levels.



- **work with local governments**
- **provide economic data & research**
- **strategies & tools**



Austin, TX



Wenatchee, WA

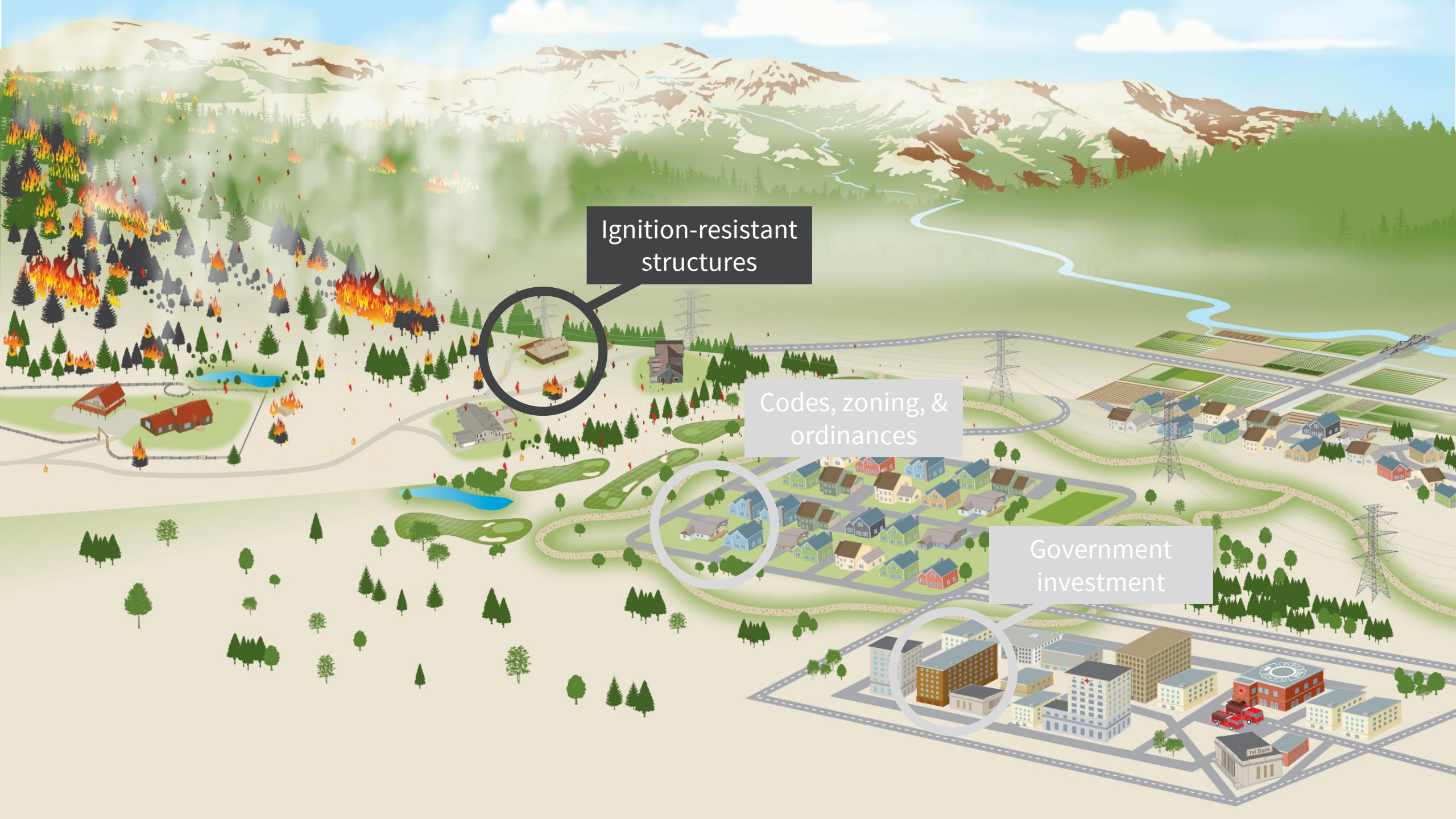


Park County, MT



Ocean Township, NJ





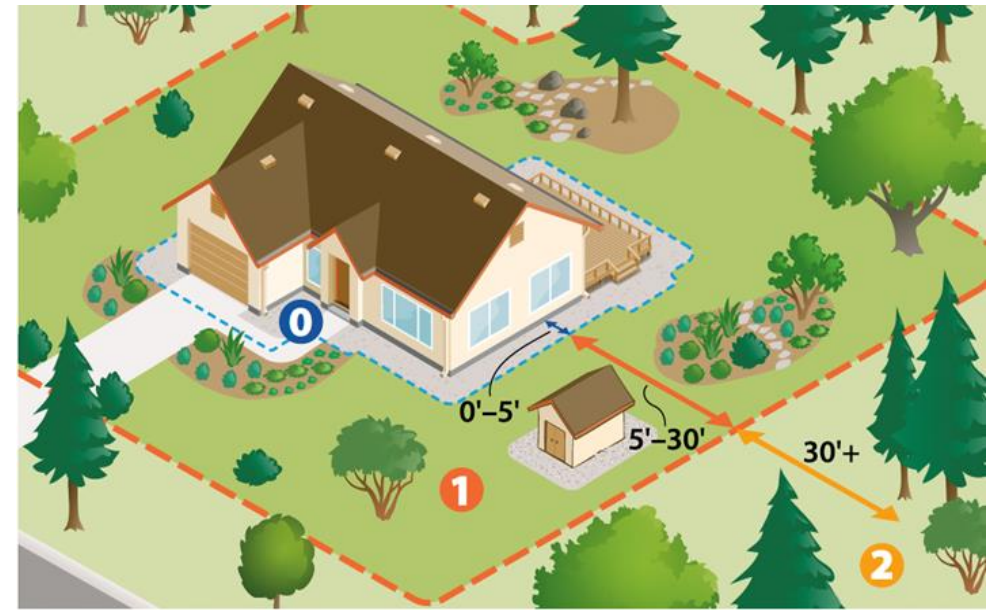
Ignition-resistant structures

Codes, zoning, & ordinances

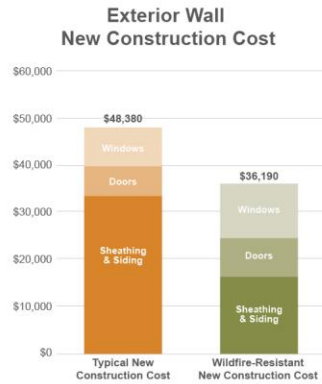
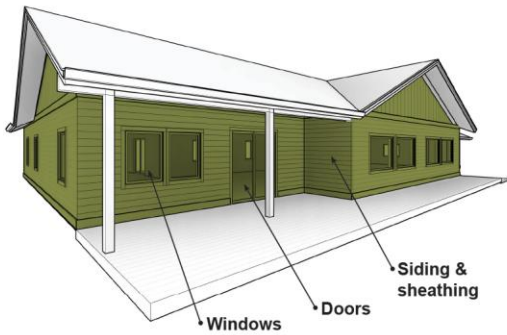
Government investment

“Aren’t some places simply too dangerous?”





Exterior Wall New Construction





Workshop with 150 construction industry workers

Top referrals

- 1. Learn Leap Online** *realtor continuing education*
- 2. Realtor.com**
- 3. Redfin.com** *home value estimator*
- 4. Bob Vila** *home improvement TV show*

BOB VILA

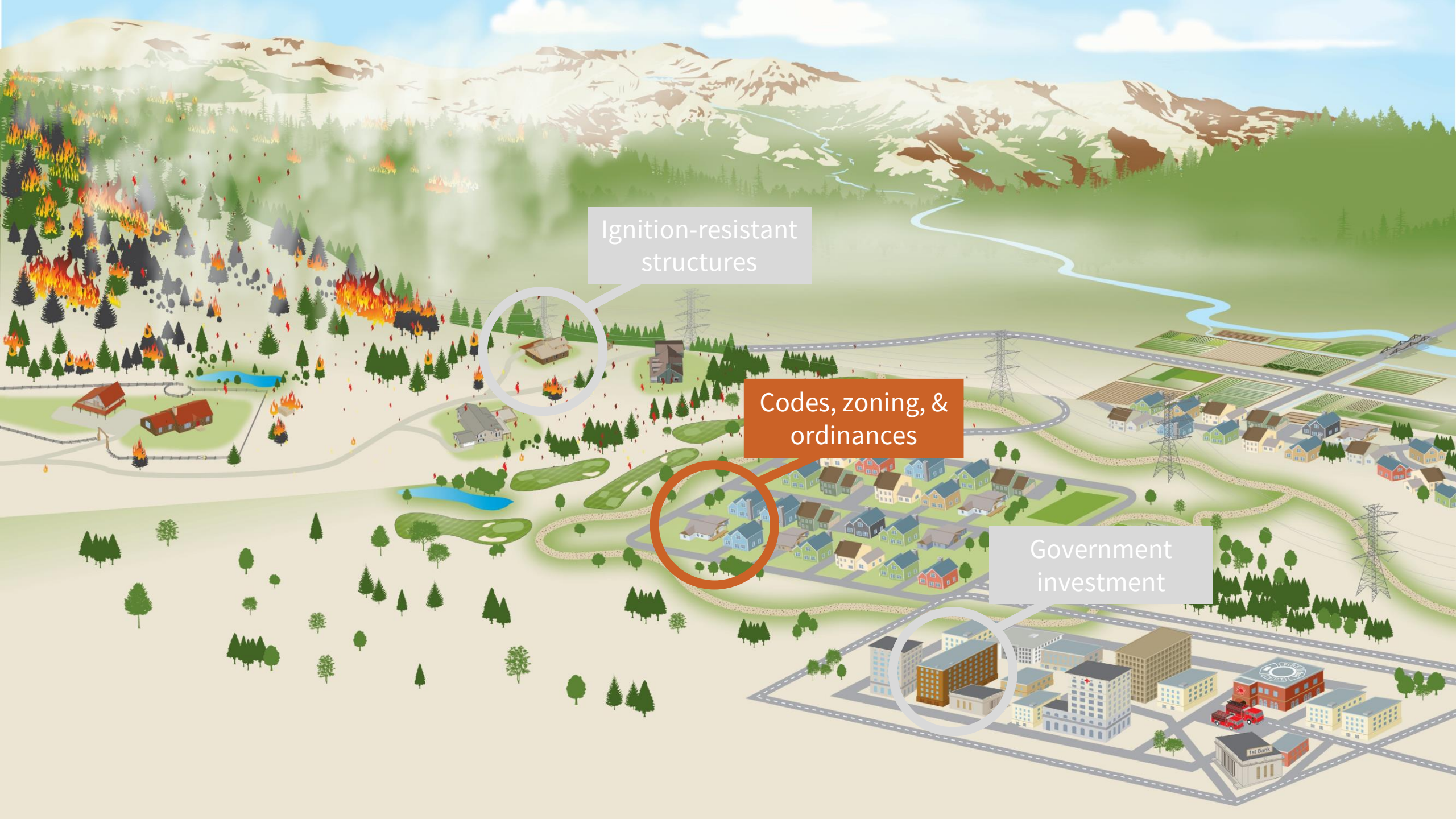
APPROVED!



Excerpt from
BUILDING FOR
WILDFIRE



HEADWATERS
ECONOMICS



Ignition-resistant structures

Codes, zoning, & ordinances

Government investment



“ Do we really need codes & zoning?”

Create the support



Congress identified earthquake-related losses could be reduced through:



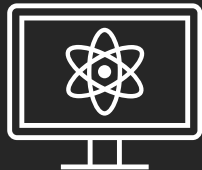
Land use controls and redevelopment



Building codes, training, and outreach



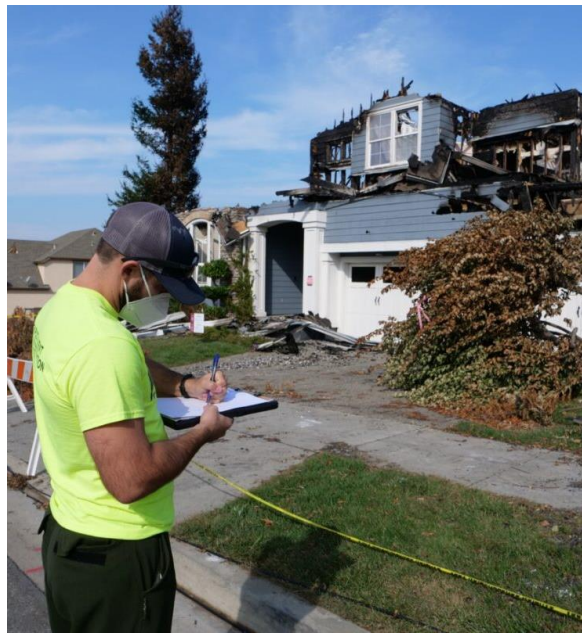
Improved design & construction methods



Advancing science, research, & development

Overcome the opposition





Build local capacity



Video excerpt



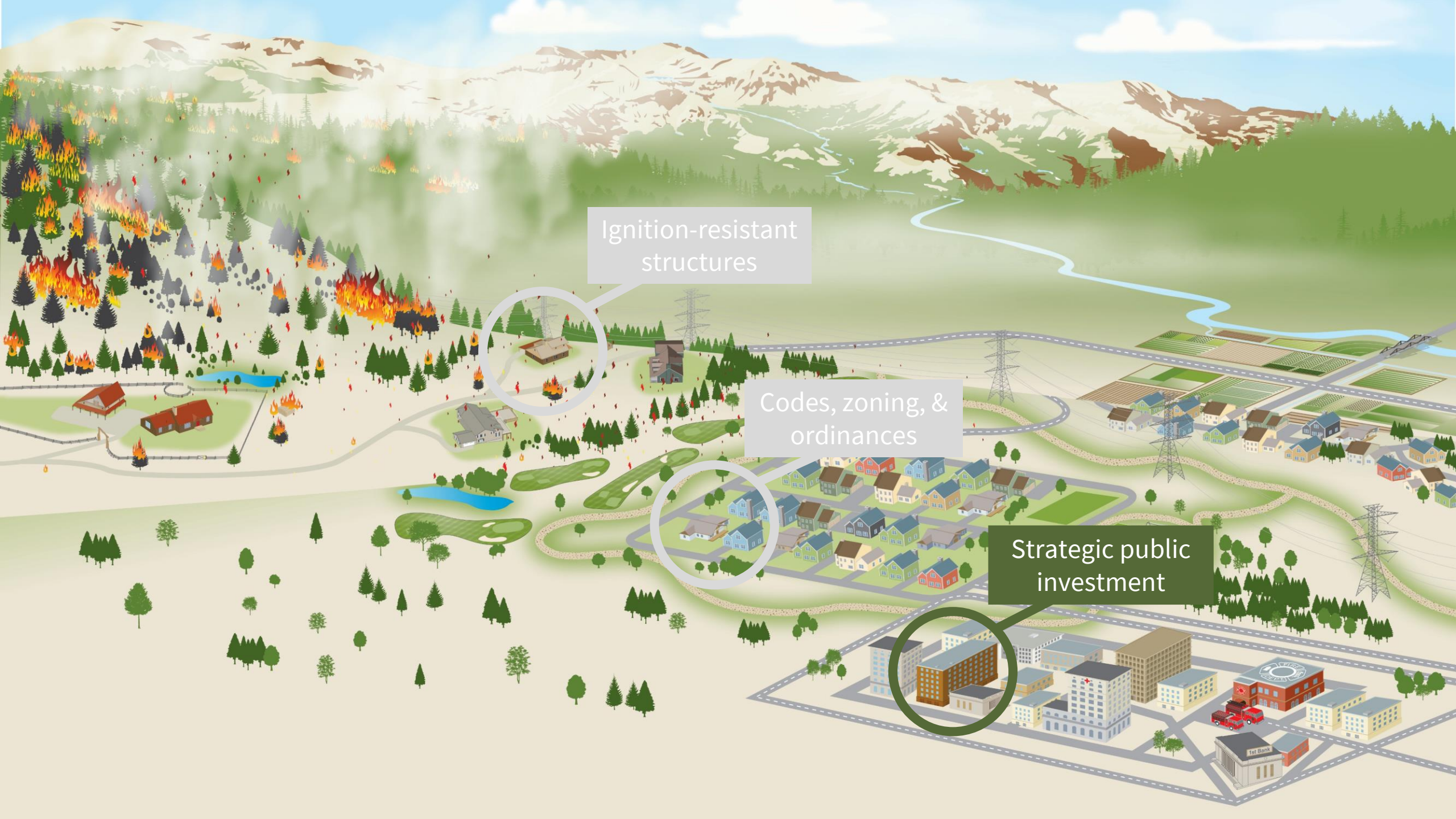
Tom Vocke

Division Chief, Fire Marshal
Austin Fire Department



Alison Alter

Council Member, District 10
Austin, TX



Ignition-resistant structures

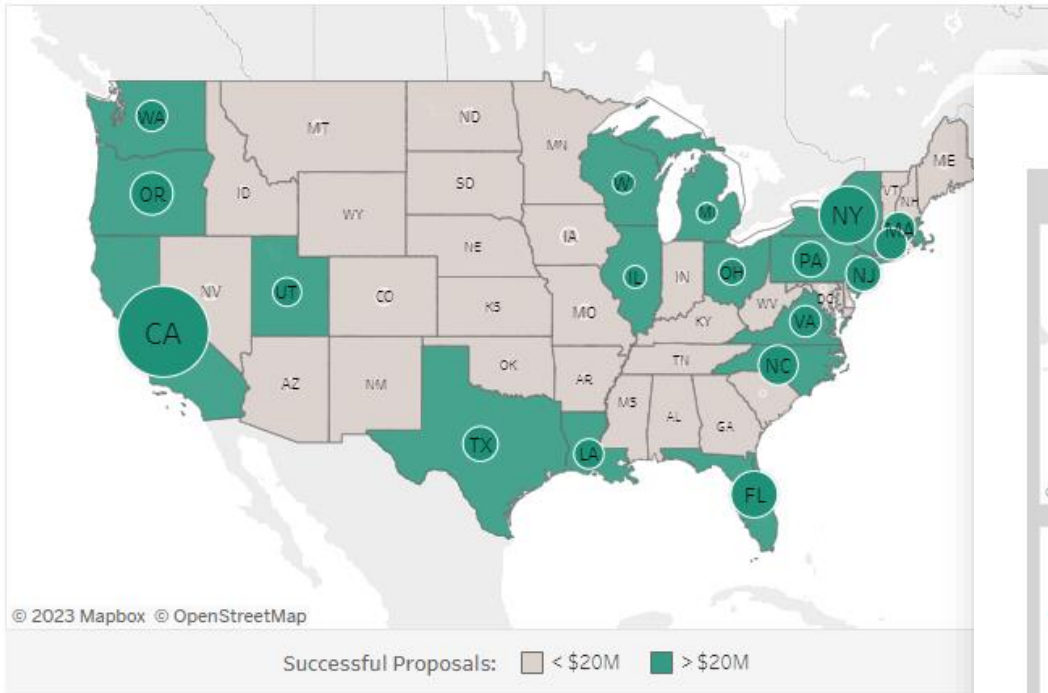
Codes, zoning, & ordinances

Strategic public investment

Evaluate Reach of Federal Programs

FEMA BRIC Funds by State

BRIC Program Year: Year 3



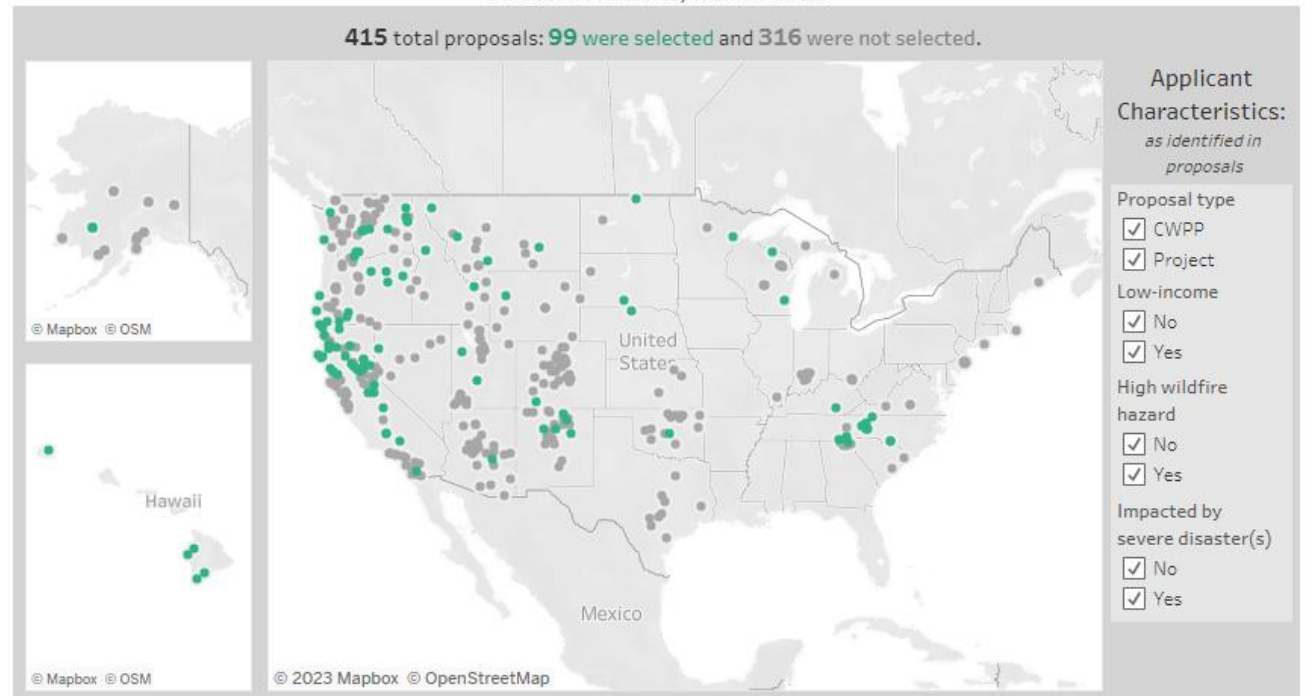
Data Source: FEMA. To compare funding between years, all dollars have been adjusted for inflation and reflect 2022 dollars.



Community Wildfire Defense Grants

Selection Results, March 2023

415 total proposals: 99 were selected and 316 were not selected.



Data Source: Department of Agriculture Forest Service.





COMMUNITY WILDFIRE DEFENSE GRANTS

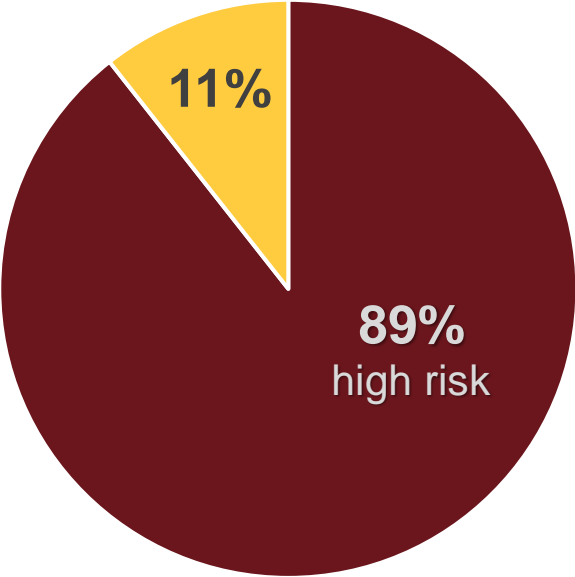
\$1 Billion

over 5 years

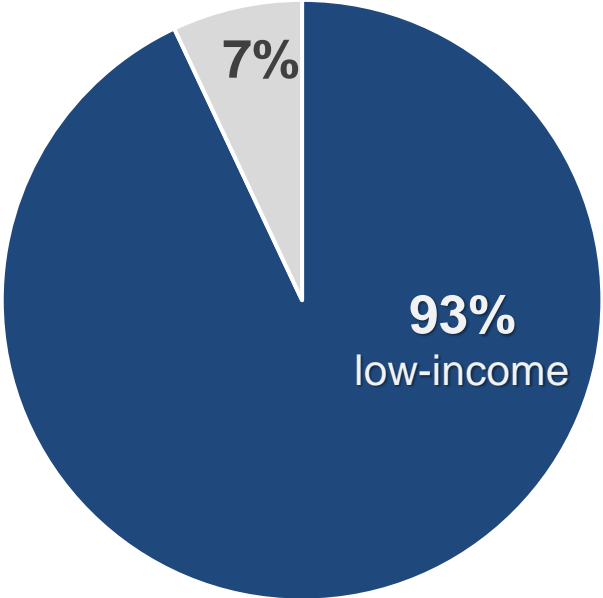
- **Created in the Bipartisan Infrastructure Law**
- **Competitive grants**
- **Prioritizes high-risk, low-income communities**
- **Round 1 announced in March**
- **Round 2 was due October 31**

High-risk, low-income places were prioritized...

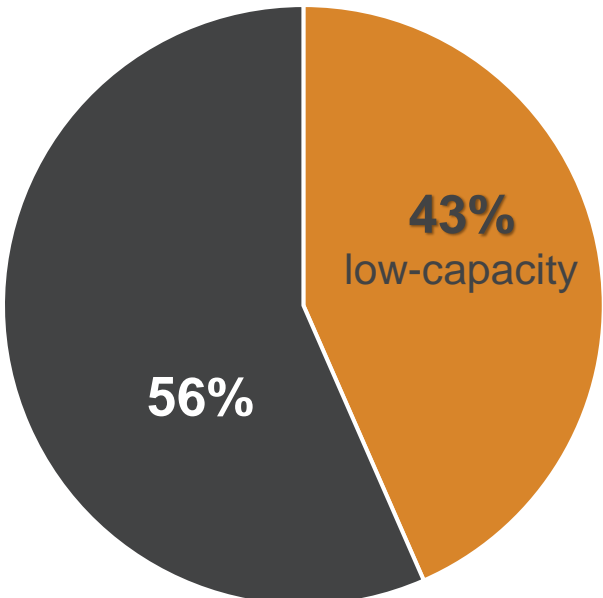
High risk places received 89% of funding



Low-income places received 93% of funding



Low-capacity places received less than half of grants



...but low-capacity places were less successful.

Improving access to wildfire grants





Community Wildfire Defense Grants

Find eligibility and scoring information for your community.

🔍 Which community, county, or tribal area?

Have questions about this Dashboard?

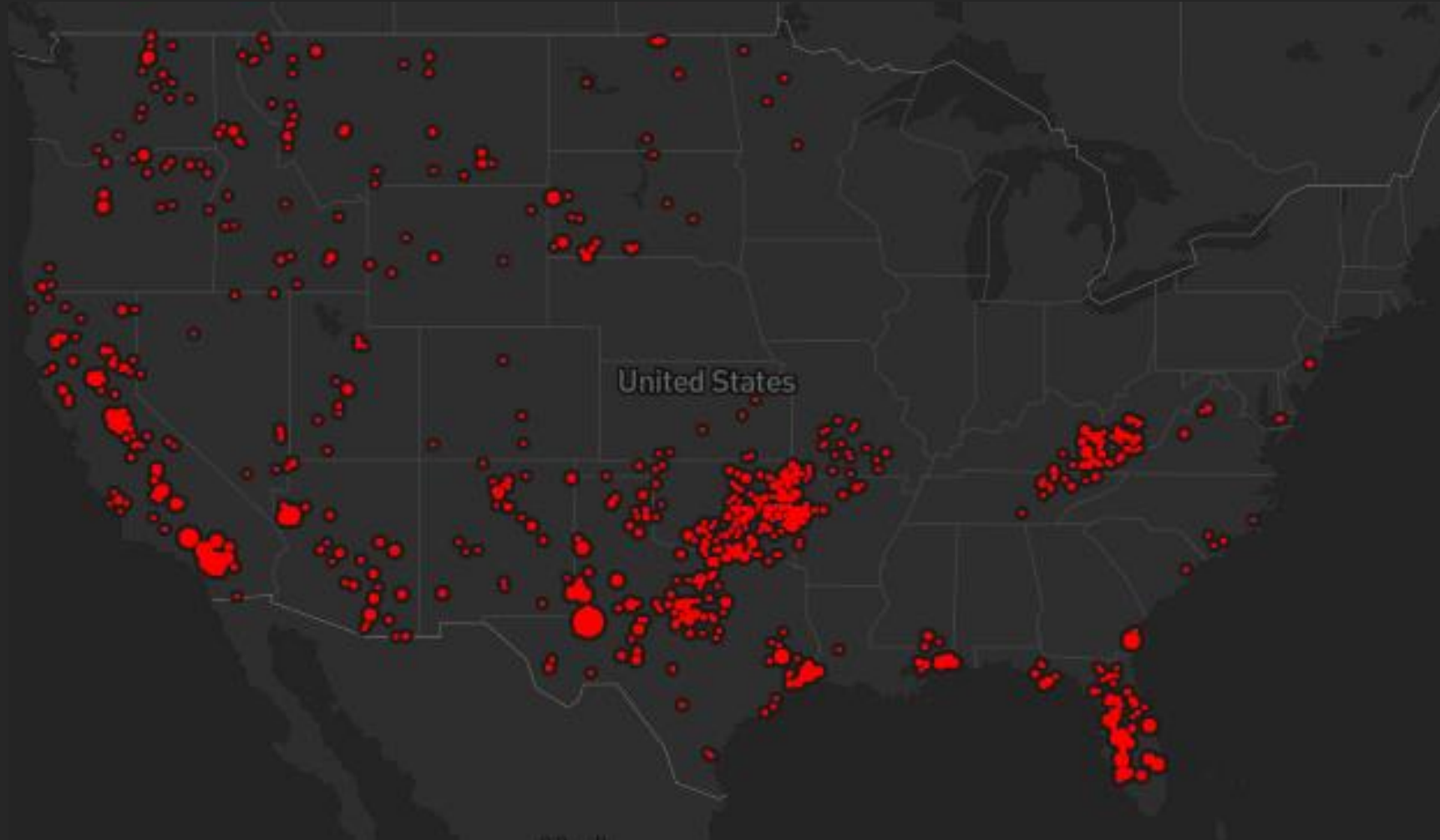
[See our FAQ](#)



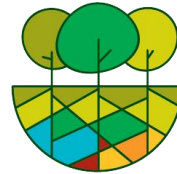
About Community Wildfire Defense Grants

The U.S. Forest Service's Community Wildfire Defense Grant (CWDG) program is intended to help at-risk communities and Tribes plan for and reduce the risk of wildfire. The program, which was authorized by the Bipartisan Infrastructure Law, prioritizes at-risk communities in areas identified as having high or very high wildfire hazard potential, that are low-income, or that have been impacted by a severe disaster that increases the risk of wildfire. [Read more](#) about the CWDG program.

**4,000+ communities have
high wildfire risk & low capacity**



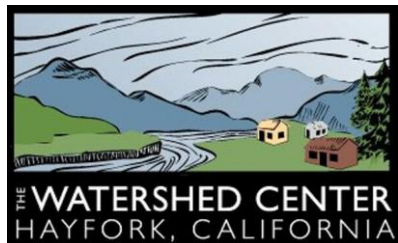
Access to Technical Support

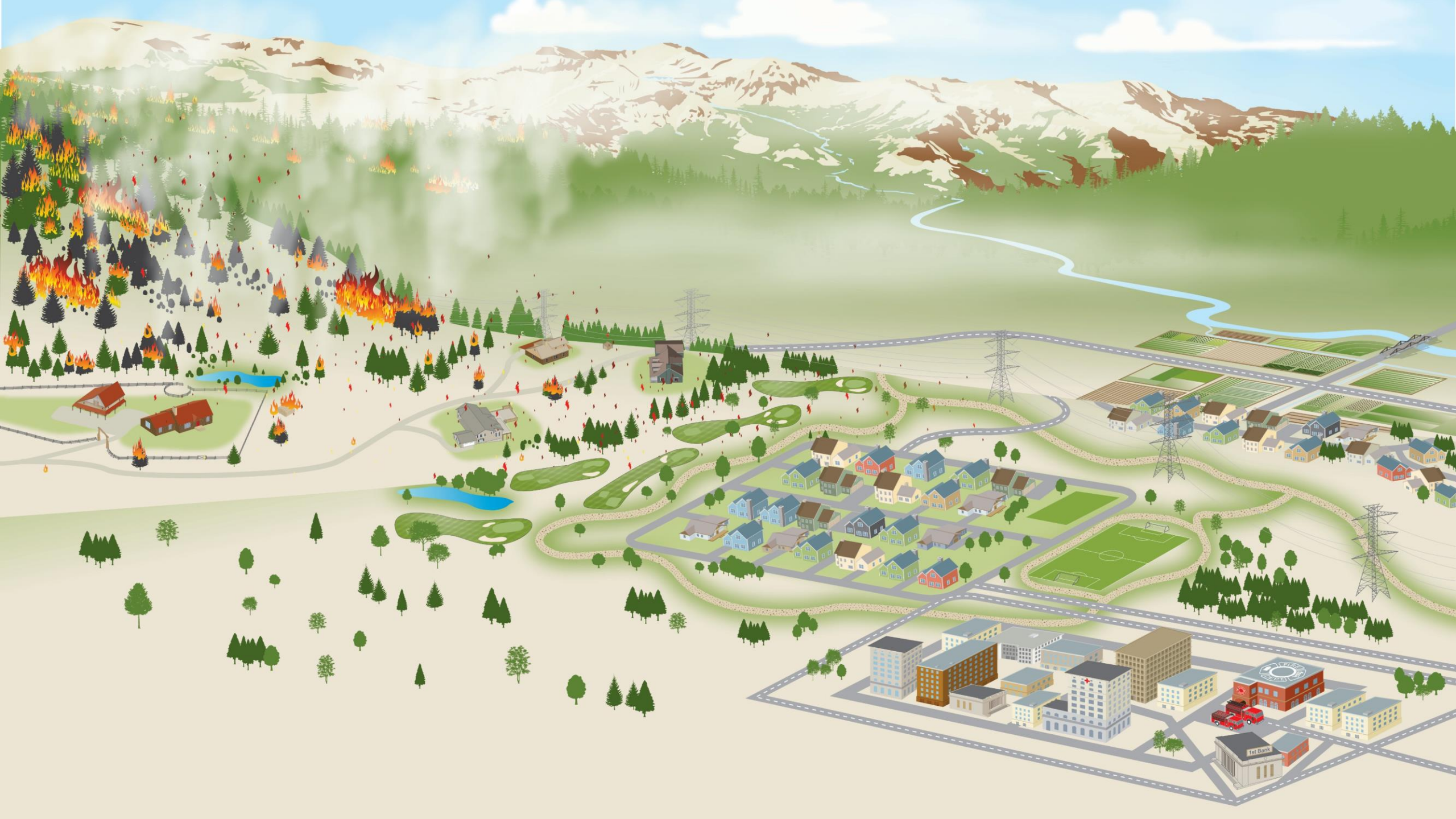


FIRE ADAPTED COMMUNITIES
LEARNING NETWORK



ROUTT COUNTY
WILDFIRE MITIGATION
COUNCIL







The moral imperative



Thank you!

Newsletter



headwaterseconomics.org/contact



Patty Hernandez

Executive Director

patty@headwaterseconomics.org